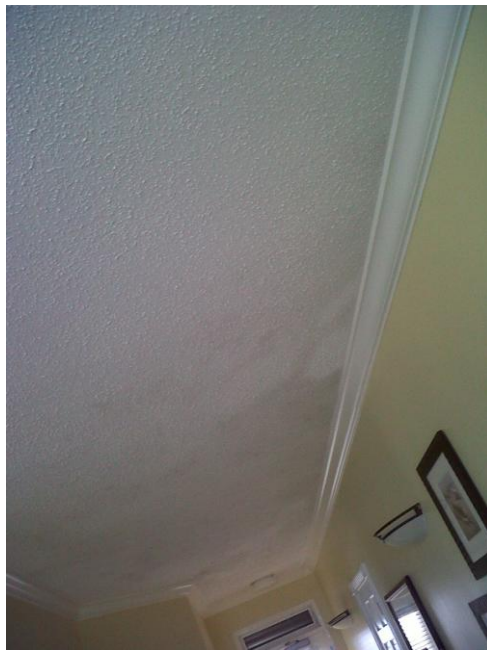




Hurricane Irene

August 23-27, 2011



Damaged ceilings in Owners' Units – mold, bubbling & water



Hurricane Irene Work List

Houskeeping [Guest rooms, Public Area, Hospitality Lounge, Bathrooms]

- remediation mold & mildew rooms (interior and exterior) mold ceilings, walls, floorboards, vents, windows, doors, screens, sofas, furniture, water stain marks from wind driven rain, patios debris and excess rain
- water (flooding) extraction/removal
- General cleans

Maintenance [Guest rooms, Public Area, Hospitality Lounge, Bathrooms, P&B, Grounds]

Pre-Hurricane - secured and protected assets throughout the resort; removed furnished and stored, wrapped and tied exterior decorative lamps and chandeliers, stowed furniture and equipment, removed and stowed computers, pulled all patio furnishings inside guest rooms, stowed all P&B furniture, sports equipment and umbrellas, lowered pool levels, lowered cystem levels, sandbagged lower levels and flood susceptible areas.

During and Post-Hurricane:

- patio screens repairs
- painting interior and exterior
- gutter repairs and replacement
- repair water cracks on exterior and interior walls
- repaired guest room water damaged and mold ceilings – removed popcorn and replaced popcorn
- repaired patio ceilings damaged and cracked
- repaired cracks, leaks and bubbling on ceilings
- repaired raised floor tiles



- repaired fitness equipment damaged by flood
- repaired water damaged ceiling in Bellmen closet
- repaired Tennis court screening
- repaired tilted light poles throughout
- repaired bent over and damaged fencing
- repaired bent over garbage compactor gates
- cut, trimmed, and removed downed trees and shrubs
- cleared damaged shrubs
- repaired and re-inforced damaged palapas
- restored plywood protected windows and doors
- inspected all rental rooms for damages and repairs
- repaired and/or replaced damaged patio partitions
- cleared beach of debris, seaweed, trash and regroomed
- cleared wind driven rained and flooded areas and removed sludge and grime from basements
- repaired blown transformers and exterior lights
- returned stowed exterior furnishings to P&B and common areas